



# Clear Creek Springdale Apartments

1745 S. Gene George Blvd. • Springdale, AR 72762 • ☎ 479.200.1440

🌐 [ClearCreekSpringdaleApts.com](http://ClearCreekSpringdaleApts.com) ✉ [Leasing@clearcreek.springdaleapts.com](mailto:Leasing@clearcreek.springdaleapts.com)

## COMMUNITY AMENITIES

- Gated Luxury Apartment Community
- Best Apartment Location in Springdale, Arkansas
- Elegant Clubhouse
- Spectacular 3,000 sq.ft. Pool with Tanning Ledge and Water Features
- Designer Clubroom with Full Kitchen and Fireplace
- Large Recreational Room for Residents
- Private Conference Room for Residents
- 24 Hour State-of-the-Art Fitness Center
- FREE Starbucks® Coffee
- Exceptionally Pet-Friendly with Pet Spa, Pet Walk and Pet Park
- Grilling Station with 4 Gas Grills and Dining Area
- Pickleball, Putting Green and Volleyball Court
- Exquisite Poolside Pergola with Fireplace and TV
- Fenced Playground
- Corporate Apartments Available and Welcomed
- Owner Managed with 40+ Years of Experience
- Community Valet Trash Collected
- Garage and Covered Parking if Available

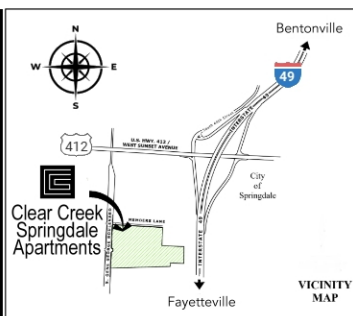
## SCHOOLS

- Har-Ber High School (10th-12th)
- Central Junior High School (8th, 9th)
- Hellstern Middle School (6th, 7th)
- Bernice Young Elementary (K5-5th)



## LOCATION

At the intersection of Interstate 49 and Highway 412 head west on Highway 412. Turn left (south) after Sam's Club onto Gene George Boulevard, continue just past Sam's Club to arrive at Clear Creek Springdale on left.



We are pledged to the letter and spirit of U.S. Policy for the achievement of equal housing opportunity throughout the Nation. We encourage and support an affirmative advertising and marketing program to obtaining housing because of race, color, religion, sex, sexual orientation, disability, familial status, or national origin. Developer reserves the right to make or adjust specifications without notice. All renderings, floor plans, features and photography are artist's depictions only. Features, pricing and dimensions shown herein are subject to change without notice. All dimensions are approximate. Oral and e-mail representations cannot be relied upon as accurately stating the representations of the Developer.



# Clear Creek Springdale Apartments

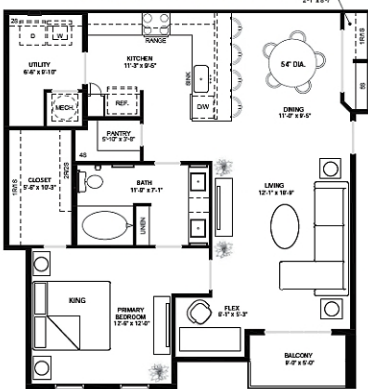
1745 S. Gene George Blvd. • Springdale, AR 72762 • ☎ 479.200.1440

🌐 [ClearCreekSpringdaleApts.com](http://ClearCreekSpringdaleApts.com) ✉ [Leasing@clearcreek.springdaleapts.com](mailto:Leasing@clearcreek.springdaleapts.com)

## APARTMENT FEATURES

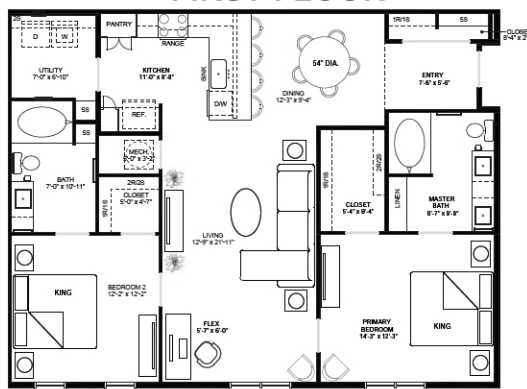
- Contemporary Open Concept 1, 2, and 3 Bedrooms
- Custom Kitchen and Bathroom Cabinets
- Expansive 3 cm Quartz Countertops with Waterfall
- Side-by-Side Refrigerator with Water and Ice Dispenser
- Full-Size Washer and Dryer in Every Apartment
- Modern Lighting Package Including Designer Custom Pendent Lighting
- Ceramic Glass Cook Top Range
- Lock-in Wood Plank Flooring
- Modern Plumbing Fixtures
- Huge Walk-In Closets
- King-Size Primary Bedrooms
- Garden Tubs in Every Bath
- Flex Space in Select Apartments for Desk, etc.
- Large Balcony on 2nd and 3rd Floor Apartments
- Walk-In Showers in Select Apartments

### FLOORS 2 & 3



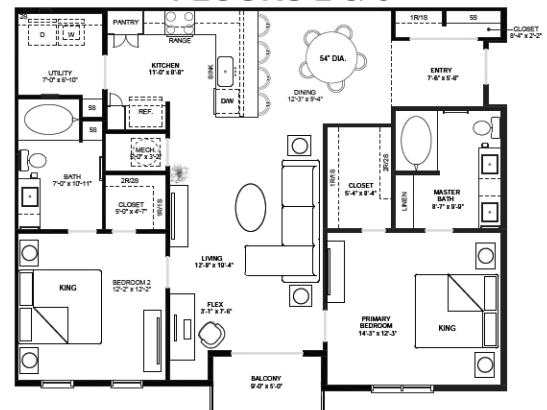
1 Bedroom, 1 Bath | sq.ft. 943  
Balcony | sq.ft. 45

### FIRST FLOOR



2 Bedroom, 2 Bath | sq.ft. 1,226

### FLOORS 2 & 3



2 Bedroom, 2 Bath | sq.ft. 1,209  
Balcony | sq.ft. 45

### FIRST FLOOR



3 Bedroom, 2 Bath | sq.ft. 1,396

### SECOND FLOOR



3 Bedroom, 2 Bath | sq.ft. 1,387  
Balcony | sq.ft. 45



We are pledged to the letter and spirit of U.S. Policy for the achievement of equal housing opportunity throughout the Nation. We encourage and support an affirmative advertising and marketing program to obtaining housing because of race, color, religion, sex, sexual orientation, disability, familial status, or national origin. Developer reserves the right to make or adjust specifications without notice. All renderings, floor plans, features and photography are artist's depictions only. Features, pricing and dimensions shown herein are subject to change without notice. All dimensions are approximate. Oral and e-mail representations cannot be relied upon as accurately stating the representations of the Developer.